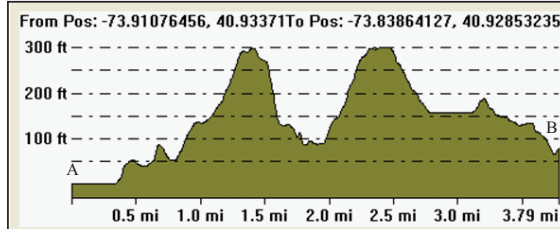




TOPOGRAPHIC PROFILE A-B

Cross-Section from Hudson River to Bronx River Parkway
Approximately Along Yonkers Avenue/Cross County Parkway, Yonker, NY



TOPOGRAPHIC PROFILE C-D

Cross-Section from Bronx/Yonkers Municipal Line to Yonkers/Hastings-on-Hudson
Municipal Line Approximately Along Riverdale Avenue/North Broadway, Yonkers, NY

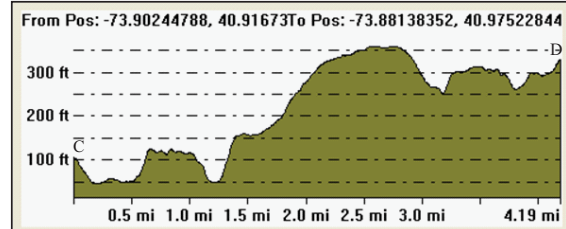


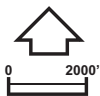
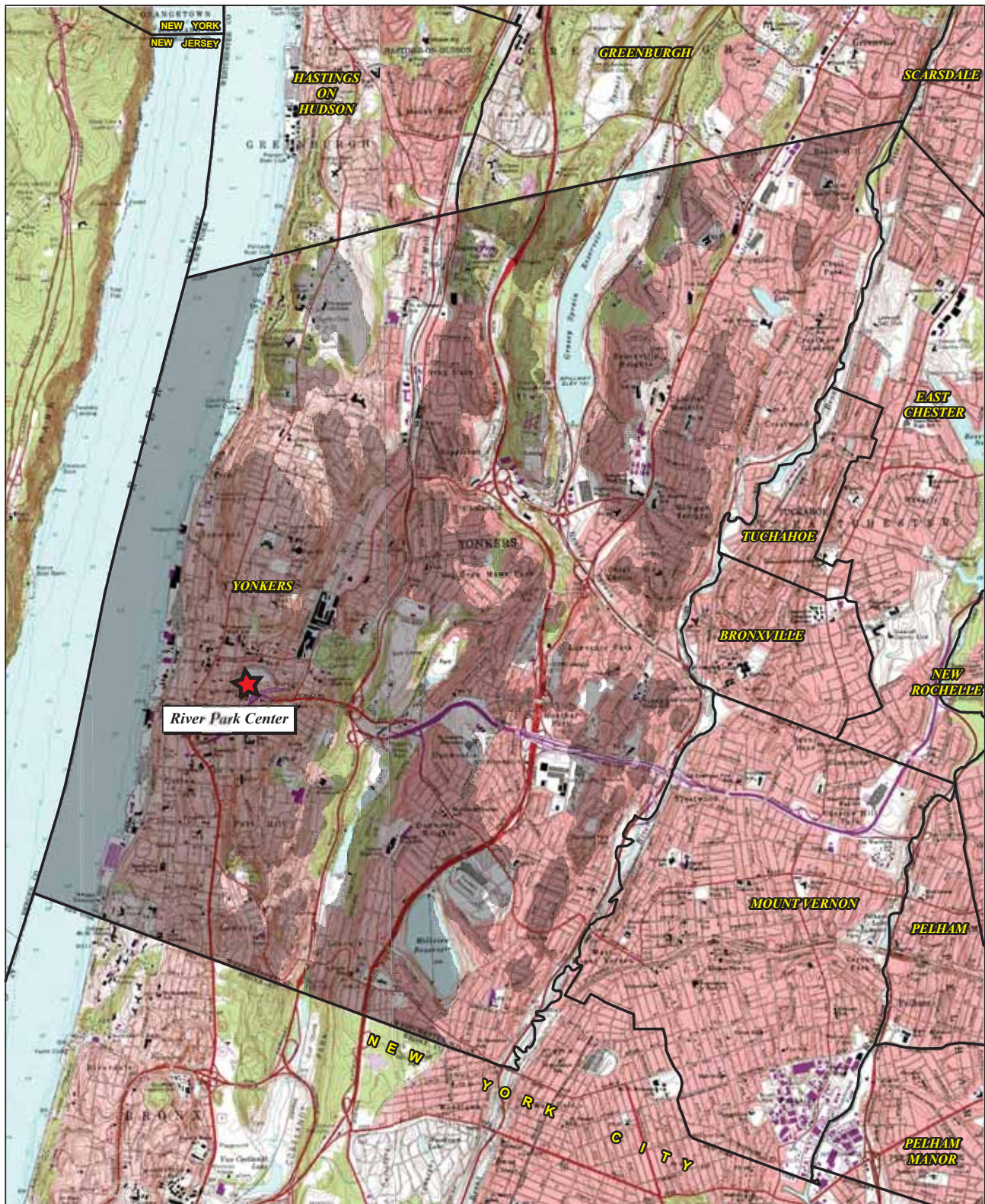
Exhibit III.B-3e
**VIEWSHED ANALYSIS
CROSS-SECTIONS**


SFC PHASE I PROJECTS

STRUEVER FIDELCO CAPPELLI LLC

BASE MAP SOURCE: Yonkers and Mount Vernon New York Quadrangle USGS.

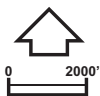
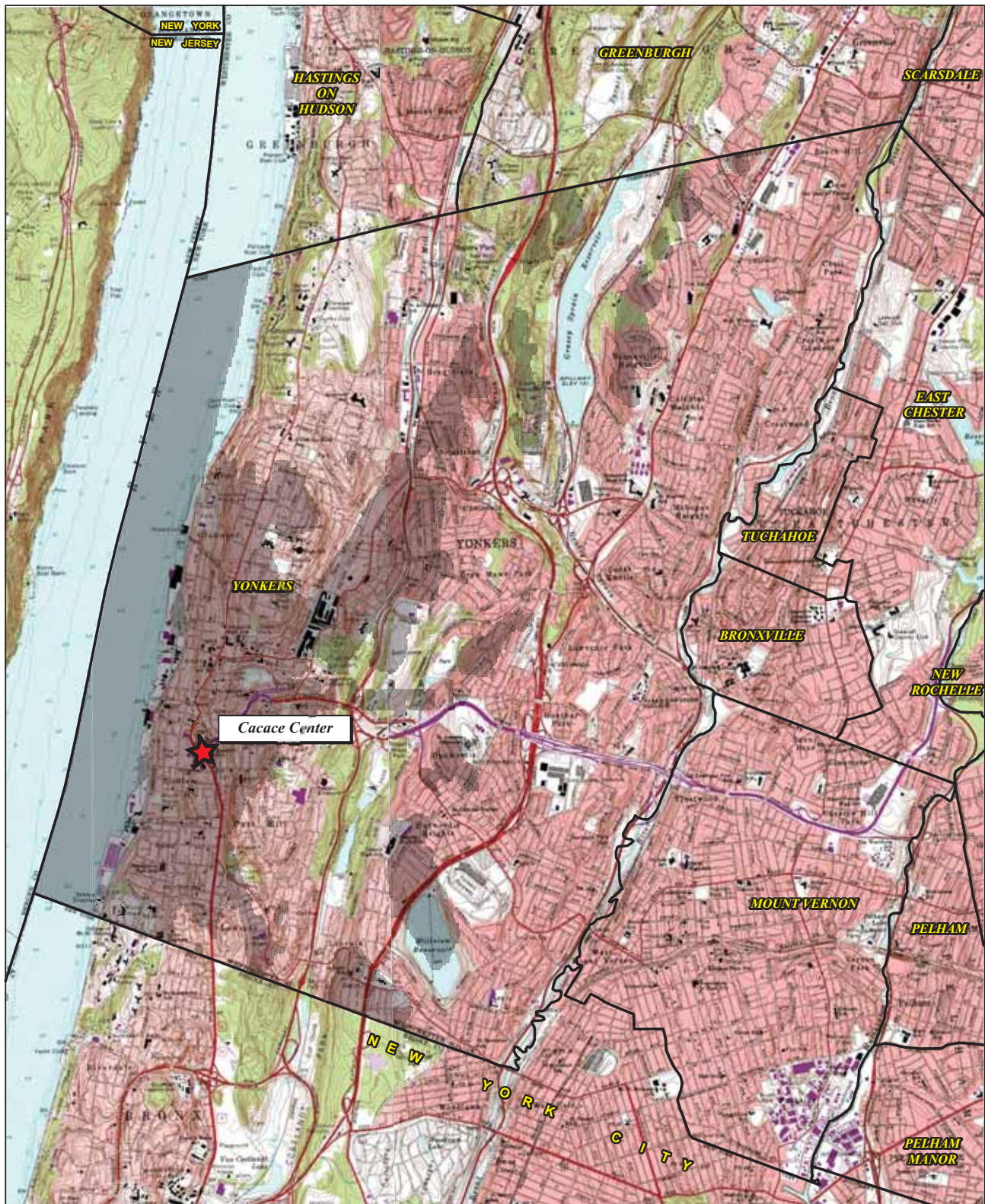
SOURCE: Viewshed analysis performed on Global Mapper software utilizing USGS 30 M resolution elevation data.



 Worst-case Viewshed: Does not consider buildings and vegetation

BASE MAP SOURCE: Yonkers and Mount Vernon New York Quadrangle USGS.
SOURCE: Viewshed analysis performed on Global Mapper software utilizing USGS 30 M resolution elevation data.

Exhibit III.B-3f
VIEWSHED ANALYSIS
RIVER PARK CENTER
SFC PHASE I PROJECTS
STRUEVER FIDELCO CAPPELLI LLC




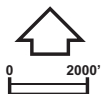
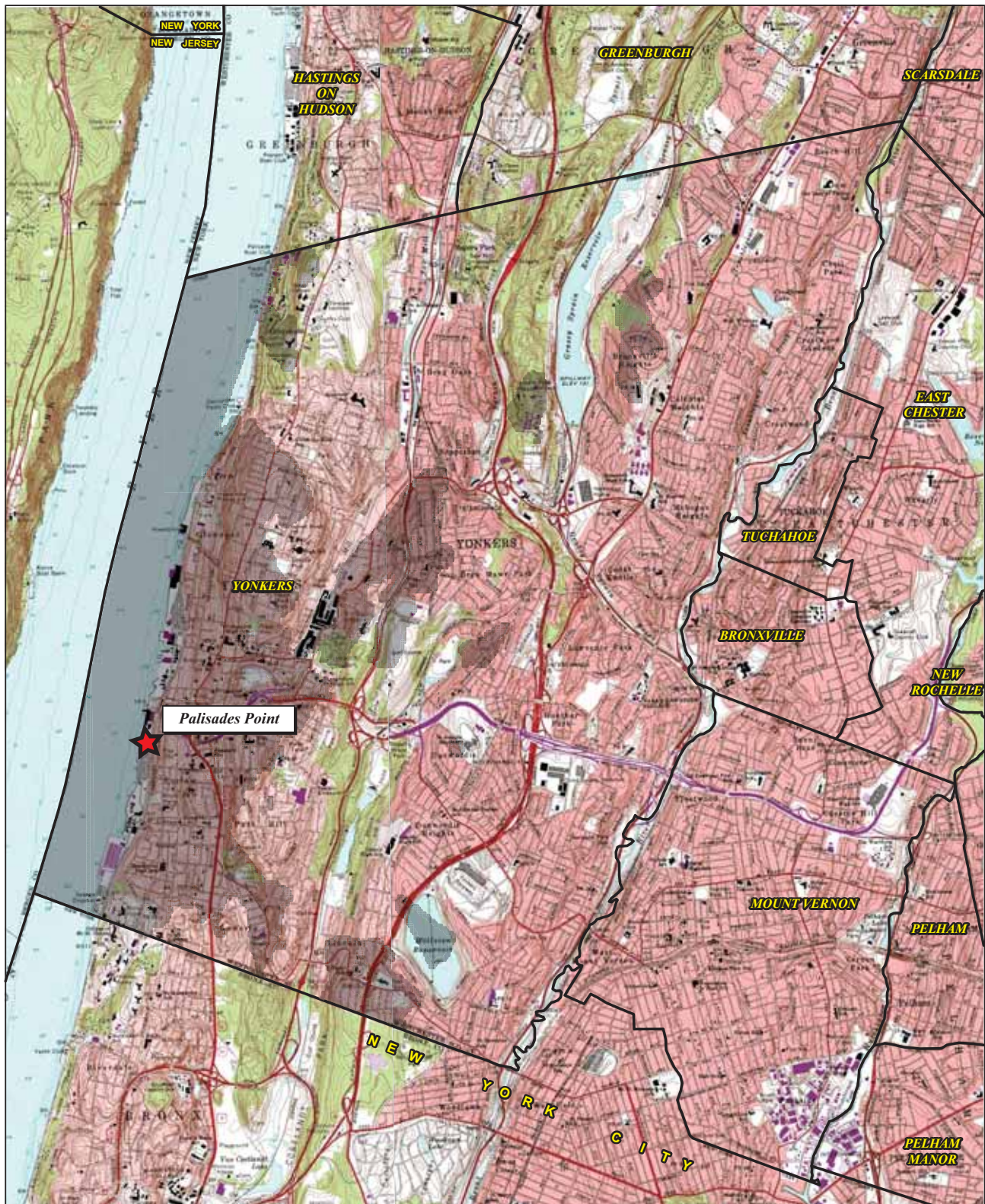
 Worst-case Viewshed: Does not consider buildings and vegetation

Exhibit III.B-3g
VIEWSHED ANALYSIS
CACACE CENTER
SFC PHASE I PROJECTS
 STRUEVER FIDELCO CAPPELLI LLC

BASE MAP SOURCE: Yonkers and Mount Vernon New York Quadrangle USGS.
 SOURCE: Viewshed analysis performed on Global Mapper software utilizing USGS 30 M resolution elevation data.




 Worst-case Viewshed: Does not consider buildings and vegetation

Exhibit III.B-3h
VIEWSHED ANALYSIS
PALISADES POINT

SFC PHASE I PROJECTS

 STRUEVER FIDELCO CAPPELLI LLC

BASE MAP SOURCE: Yonkers and Mount Vernon New York Quadrangle USGS.
 SOURCE: Viewshed analysis performed on Global Mapper software utilizing USGS 30 M resolution elevation data.